

# Sector led improvement in councils' adult social care services

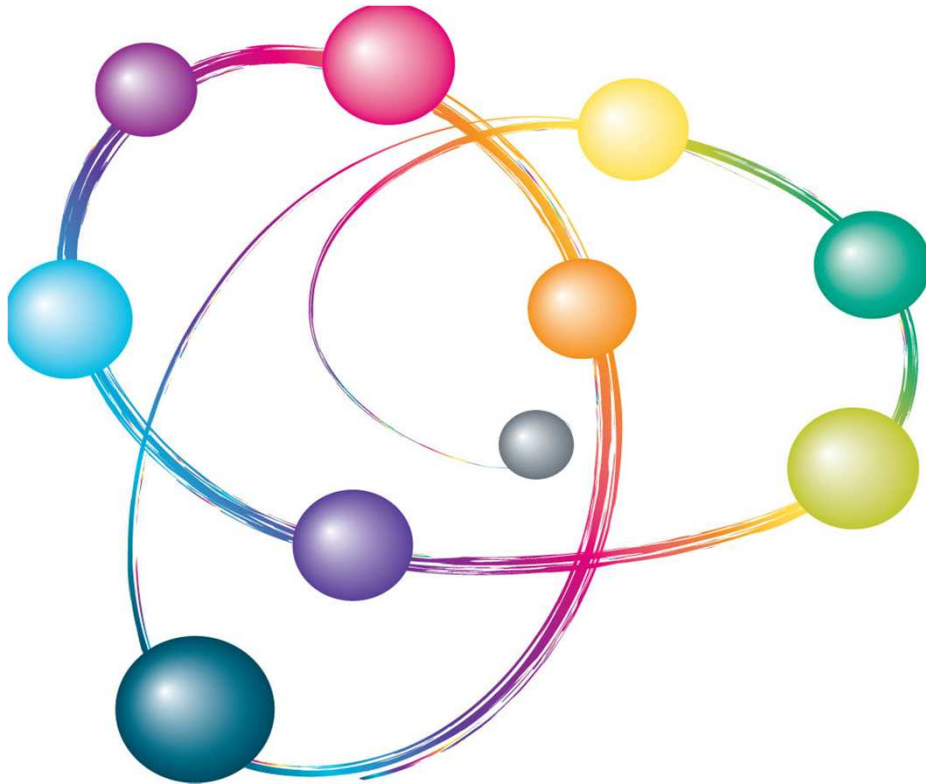
Dennis Skinner and Oliver Mills

# Sector led improvement – starting point: the core principles

- Councils responsible for own performance
- Stronger accountability - greater transparency
- Collective responsibility for performance
- LGA's role is to support councils



# Sector led improvement – key components and the 7 point ‘offer’



- leadership support
  - accountability tools
  - transparent and comparable data
  - peer challenge
  - peer support
  - knowledge hub
  - learning and support
-

# Towards Excellence - Sector led improvement in Adult Social Care

- **Programme Board:** ADASS, CQC, DH, LGA, SCIE, SOLACE, TLAP – coherent approach
- **Funding** from DH

## **Priorities for 2012/13**

- **Local accounts:** accountability and engagement
  - **Data:** profile on adult social care
  - **Adequate councils:** complete improvement work
  - **ADASS regions:** funding to implement priorities
  - **Further support:** arrangements for engaging with councils
  - **Safeguarding and use of resources:** key to improvement
  - **Member engagement** and leadership programmes
  - **Improvement support:** coordinating national offers
-